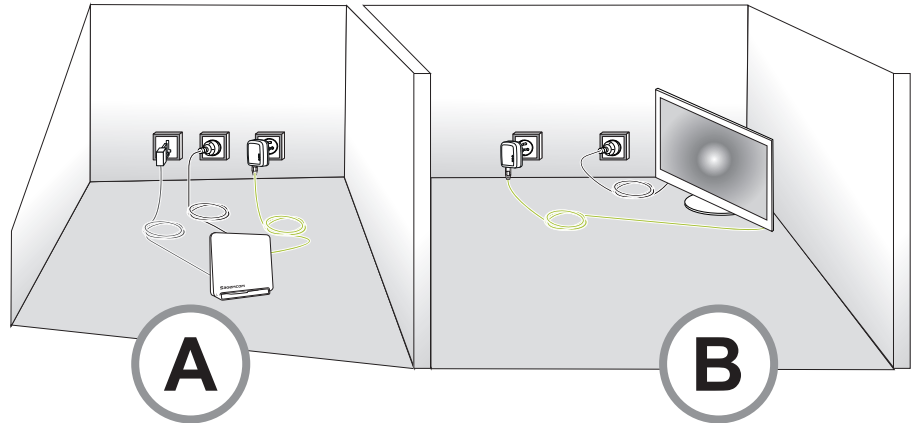
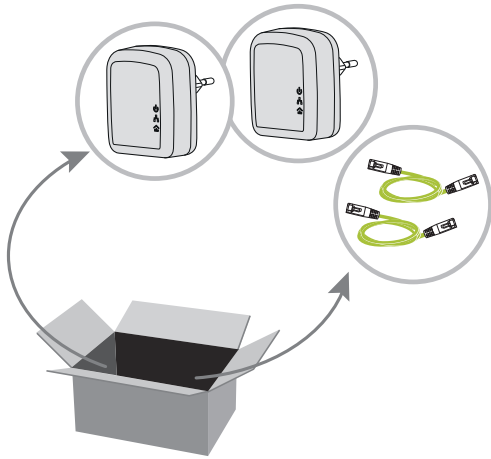
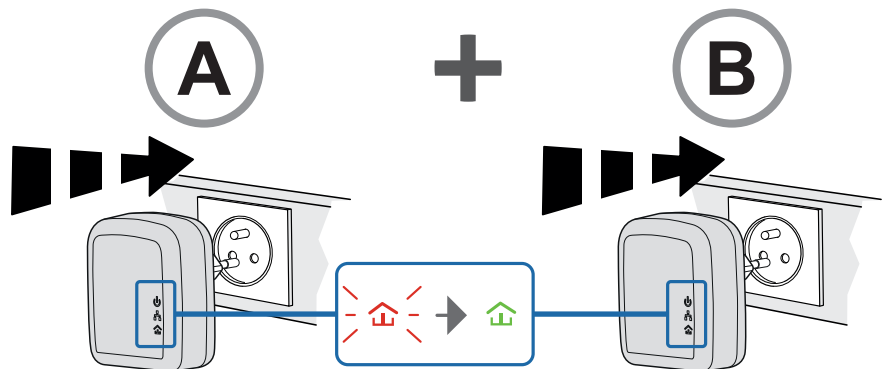


# F@ST PLUG 501 DUO - Quick Installation Guide



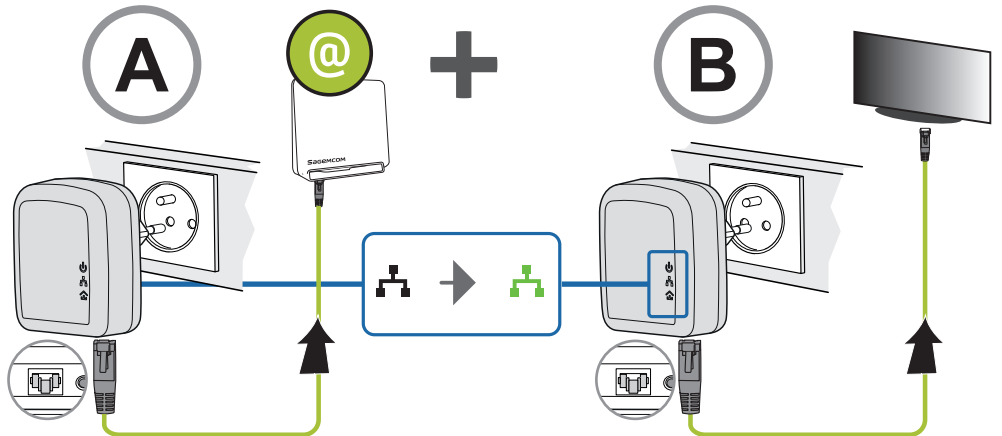
**1**

**Plug both devices into the mains**

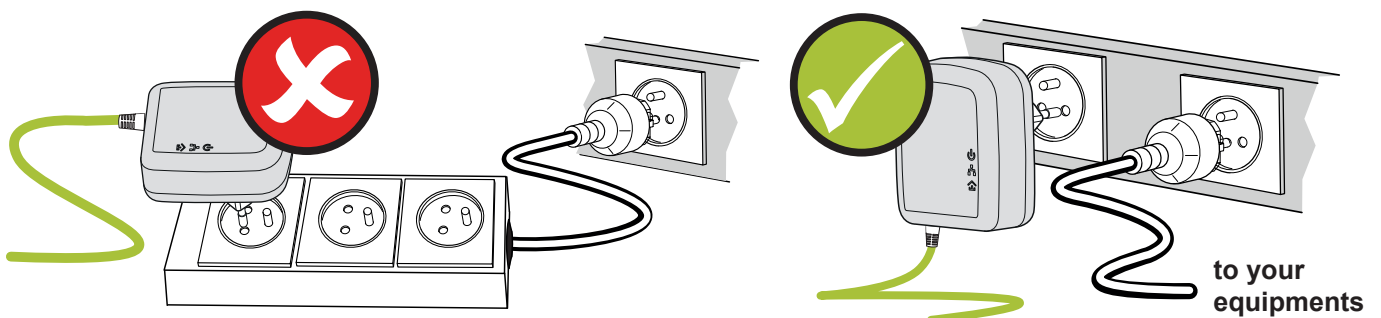


**2**

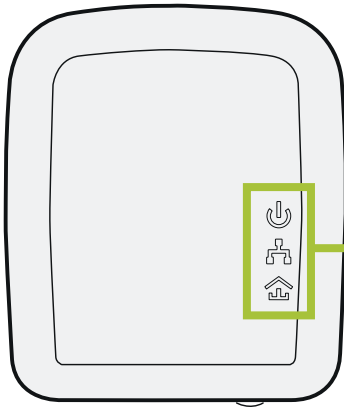
**Connect your equipments**



**RECOMMENDED USE OF A MULTIPLE PLUG ADAPTER**



For more information about the way to secure your network or to join a HomePlug AV network, please consult the User Guide available on the <http://support.sagemcom.com> website.



Device is **OFF**.



Device is **ON**.



Device is in «**idle mode**» when LED flashes every 15 sec.



Ethernet port is **not** connected.



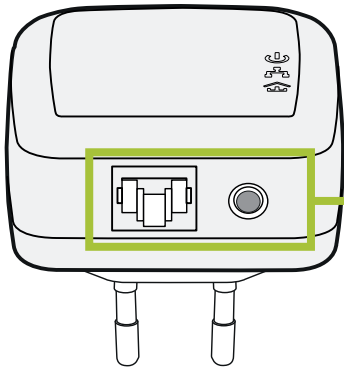
Ethernet port is **connected**.



No powerline device detected on your network.



At least one powerline device is detected on your network.



#### Ethernet port

Use the Ethernet port to connect your equipments using the Ethernet cable provided.



#### Security button

Press this button between,

- 0-3 sec to join a powerline network
- 7-10 sec to leave the current powerline network or start a new network
- 12-15 sec to return a device to its original factory default configuration

### Important :

- Your devices have been already paired during manufacturing and will associate automatically once they are plugged into the mains : no setup is required.
- The security button cannot be used when the device is in idle mode.

For more information on how to increase security on your network or add additional devices to an existing powerline network, please consult the User Guide available on the <http://support.sagemcom.com> website.

# SAGEMCOM

## Sagemcom Broadband SAS

Headquarters: 250, route de l'Empereur  
92848 Rueil-Malmaison Cedex - FRANCE

Tel: +33 (0)1 57 61 10 00 - Fax: +33 (0)1 57 61 10 01

[www.sagemcom.com](http://www.sagemcom.com)